



Tata Electronics Overview

October 2024

The #1 group in India



A STRONG LEGACY OF PIONEERING INDUSTRIES IN INDIA

<p>Revenue</p> <p>\$150 bn+</p>	<p>Profit after Taxes</p> <p>\$14 Bn</p>	<p>Market Capitalization</p> <p>\$400 bn+</p>
<p>Employees</p> <p>1M+</p>	<p>Consumers</p> <p>900 mn</p>	<p>Brand Value</p> <p>#1 brand in India</p>

Operating across markets

TOURISM & TRAVEL	TRADING, INVESTMENT & OTHERS	CONSUMER AND RETAIL
INFORMATION TECHNOLOGY	STEEL	AUTOMOTIVE
TELECOM & MEDIA	ADVANCED MANUFACTURING	FINANCIAL SERVICES
	INFRASTRUCTURE	



1903
India's 1st luxury hotel – Taj Mahal Palace, Mumbai



1907
India's 1st integrated steel plant – Tata Steel



1911
One of India's 1st hydroelectric power generating stations - Tata Power



1932
India's entry into civil aviation – Tata Airlines



1945
Launch of commercial vehicles – Tata Motors



1968
India's 1st software services company – Tata Consultancy Services



1983
India's 1st iodized branded salt – Tata Chemicals



1998
India's 1st fully indigenous car – Tata Indica



2012
World's 1st wholly owned cable network ring around the world – Tata Communications



2021
India's 1st smartphone component manufacturing – Tata Electronics



2022
India's 1st indigenous 4G/5G telecom stack – TCS & Tejas Networks



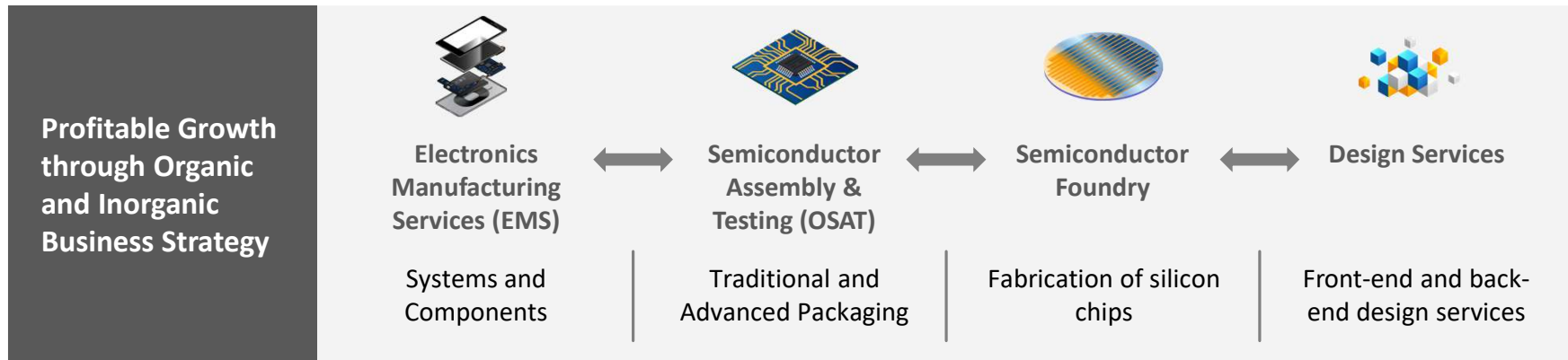
2022
India's 1st super app – Tata Neu

Tata Electronics Introduction

Tata Electronics at a Glance



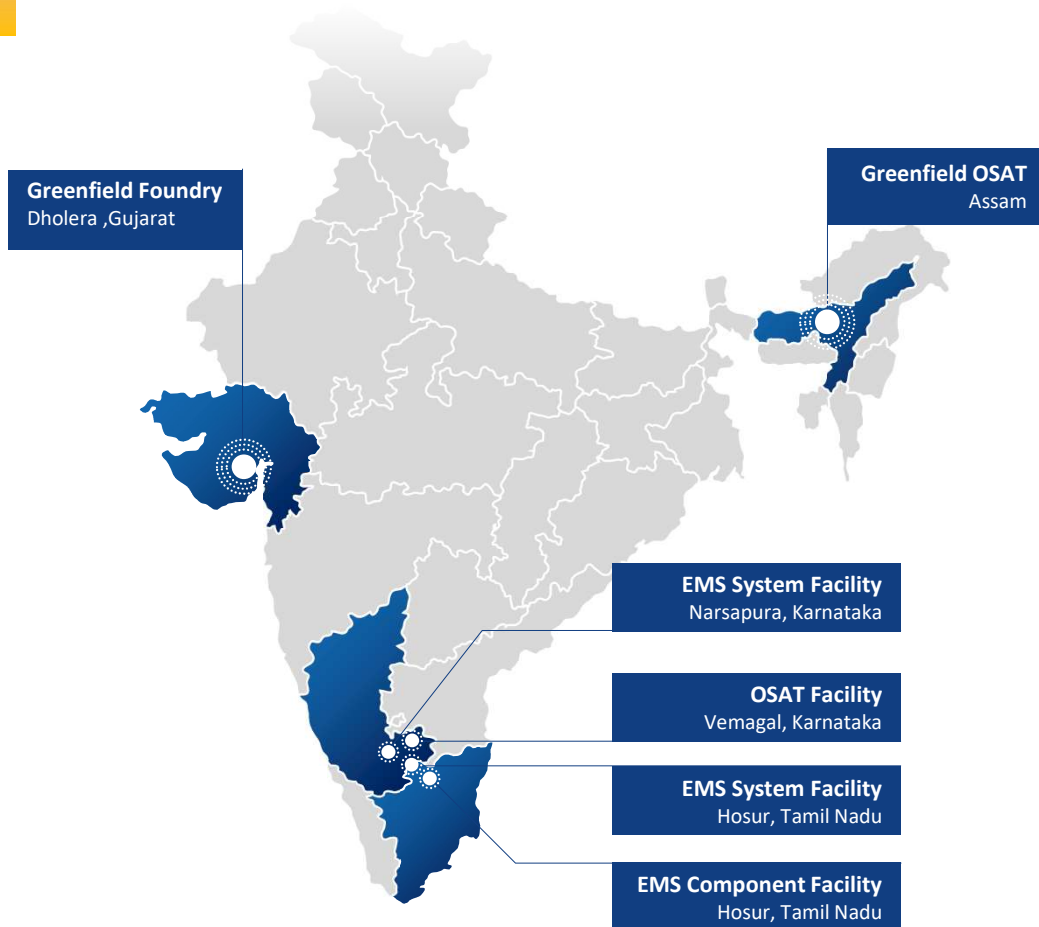
Where we will focus



Why we will succeed

Ecosystem Enablers	Favourable Geopolitical tailwinds	Government support & "Ease of doing business"	Customers seek supply chain resiliency	Strong, long lasting growth drivers (AI, 5G, Auto, ...)
Tata Differentiators	Partner of choice for customers looking to diversify supply chain	Global JV experience and #1 brand	Pioneering people & social practices	Balance sheet strength & ability to invest capital

Tata Electronics: Manufacturing Footprint



Land Area	Built-up Area	Area under construction	Current Headcount
1,500 acres	5.7 Mn Sq Ft	9.5 Mn Sq Ft	47,000 employees



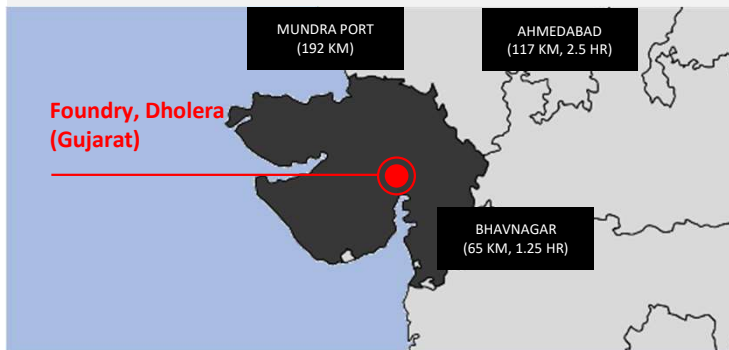
10/8/2024

Tata Electronics Foundry

Dholera Special Investment Region (DSIR)

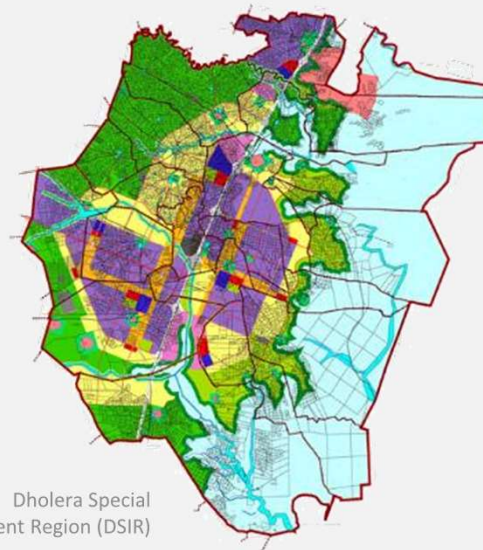
DSIR

- Greenfield industrial planned city near Dholera in Gujarat's Ahmedabad district
- Spans an area of approximately 920 km² of which industrial land is 110 km²
- Greenfield international airport being developed in Dholera; Q1'25
- Ahmedabad Dholera Expressway construction underway reduces transit time from current 2.5 hrs to 1.5 hrs
- Air / Sea/ Land Connectivity



SITE

Along the Delhi-Mumbai Industrial Corridor



INFRASTRUCTURE

- 33/66 kV & 220/400 kV
80MW of Torrent Power
- **4,400 MW Solar Park being developed by Tata Power**
- 50 Mn litres per day (MLD) committed water
- CETP (20 MLD) & STP (30 MLD)
- 2.8K m³/day gas availability

Fab Concept Design – 3D Model Snapshot





Partner with Scale & Experience

- DIVERSIFIED PRODUCT LINES & CUSTOMER BASE

Founded in 2008 and based in Hsinchu City	3rd largest foundry in Taiwan
4x 12-inch Fabs 2x 8-inch Fabs to provide Foundry services	15+ yrs of Experience
\$1.4Bn Revenue in '23	\$3.7Bn Market Cap

8,150+
Employees

ONLY FOUNDRY WITH CAPABILITIES FOR LOGIC & MEMORY

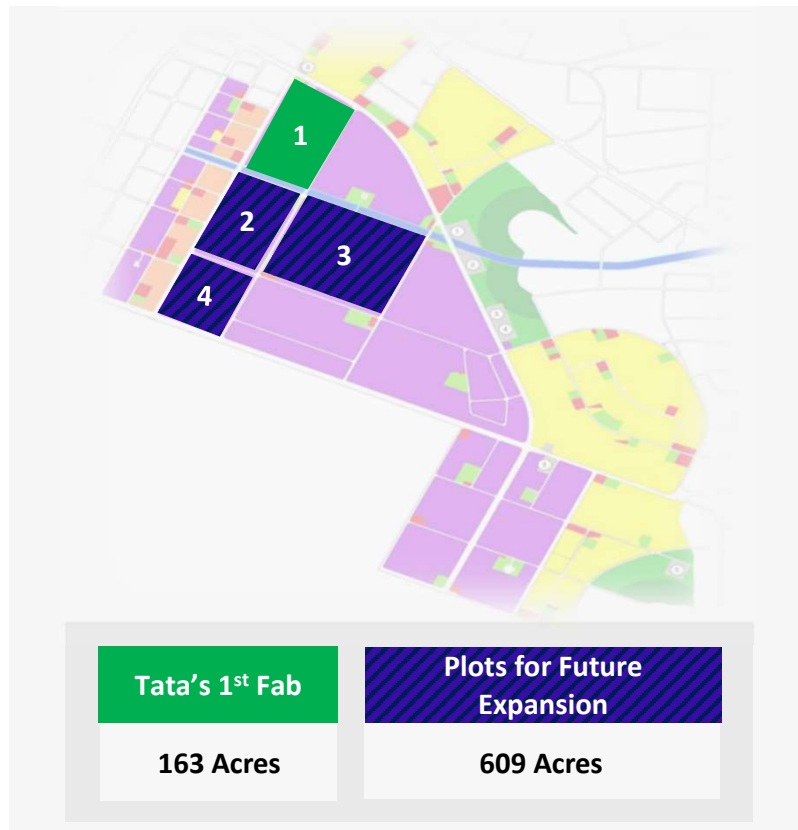
LOGIC Diversified specialty Logic IC product portfolio	PMIC	MEMORY Niche memory products with less price volatility	DRAM
	MCU/RFID		Flash
	Display Drivers		Emerging Memory
	Image Sensor		
	HPC Logic		

SERVING DIVERSIFIED CUSTOMERS FROM ASIA, NA AND EUROPE

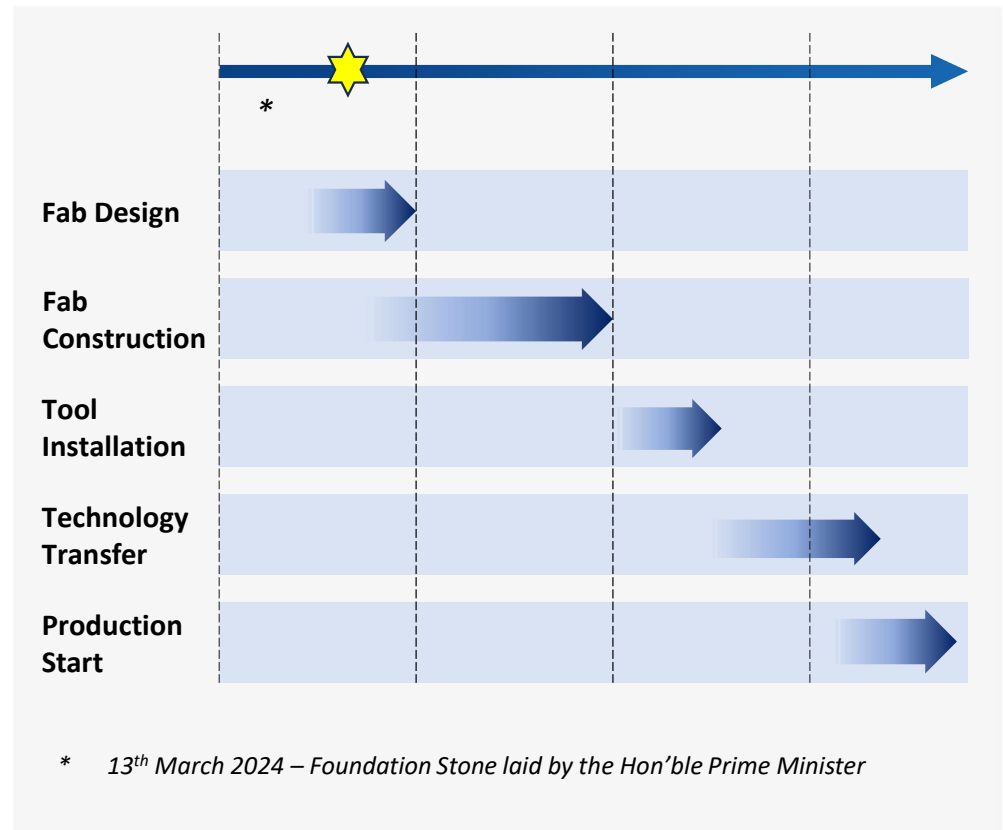
Tata as an Anchor Investor for Dholera



Land availability for Supplier Ecosystem

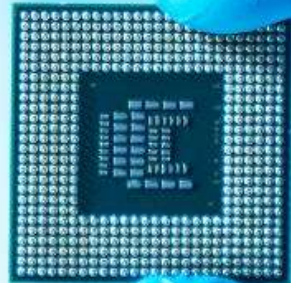


Phases for Tata Fab Development at Dholera





Thank You



10/8/2024